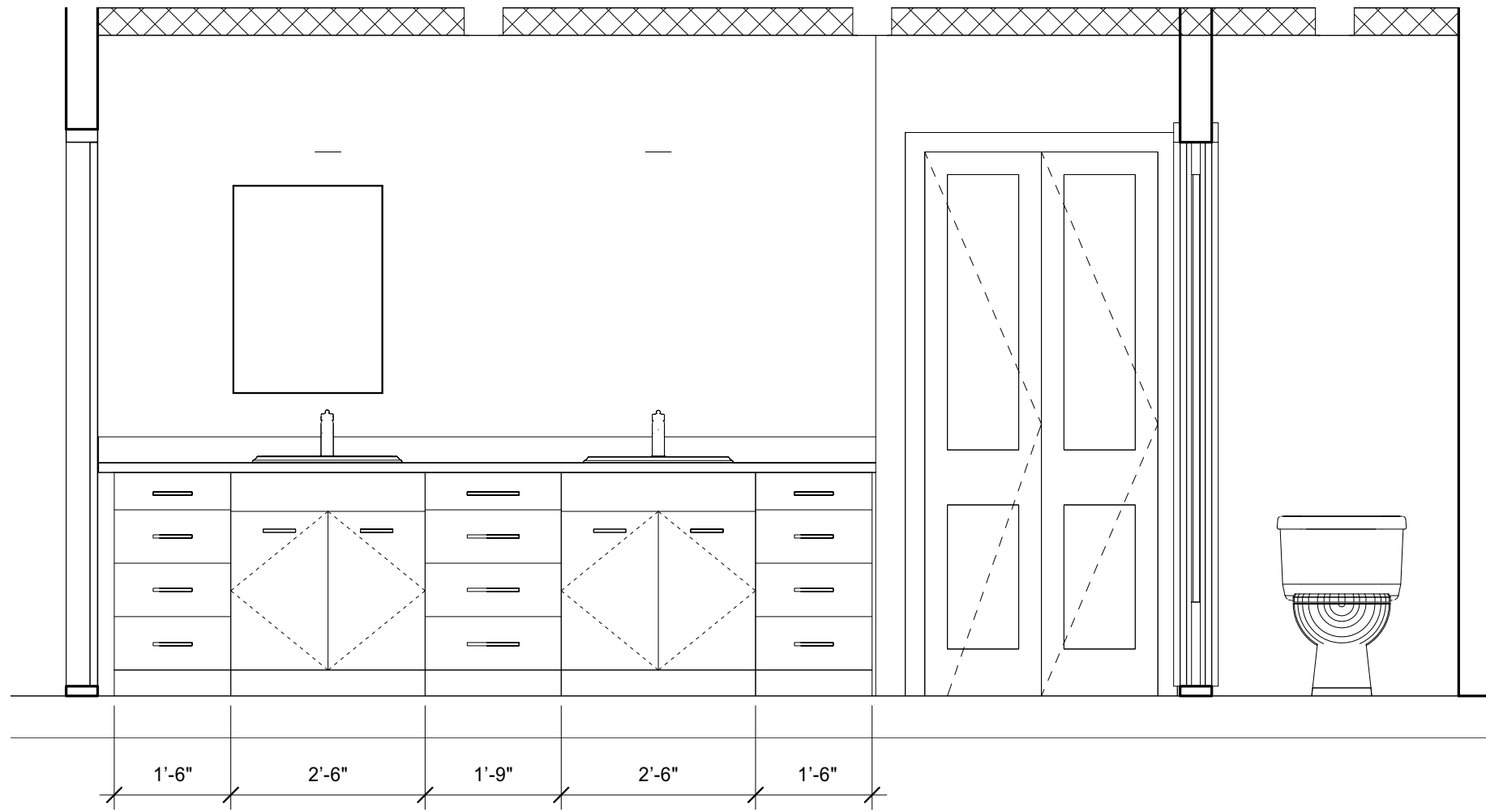


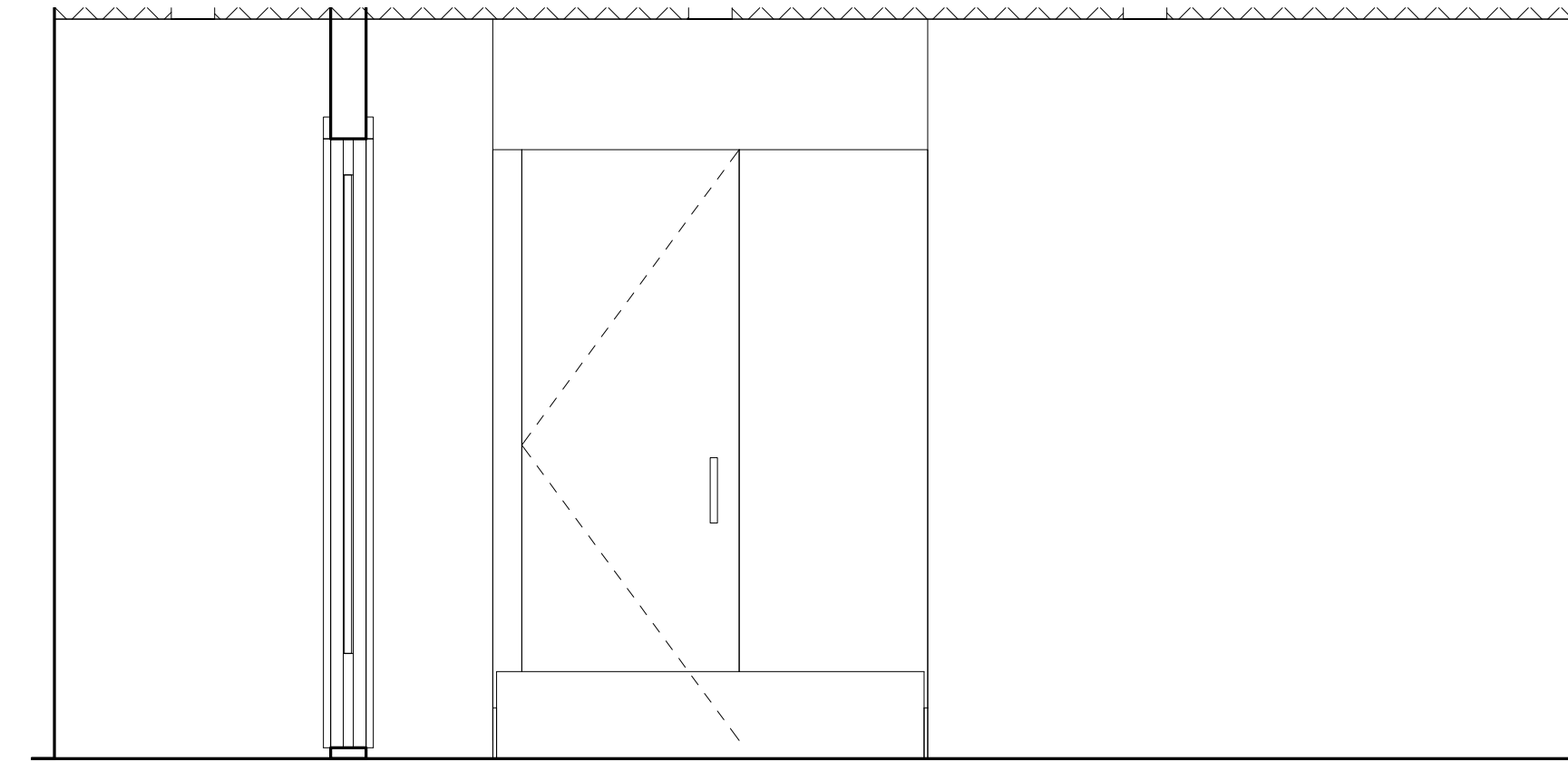


Reviewed for Code Compliance  
Inspection Division  
Approved with Conditions

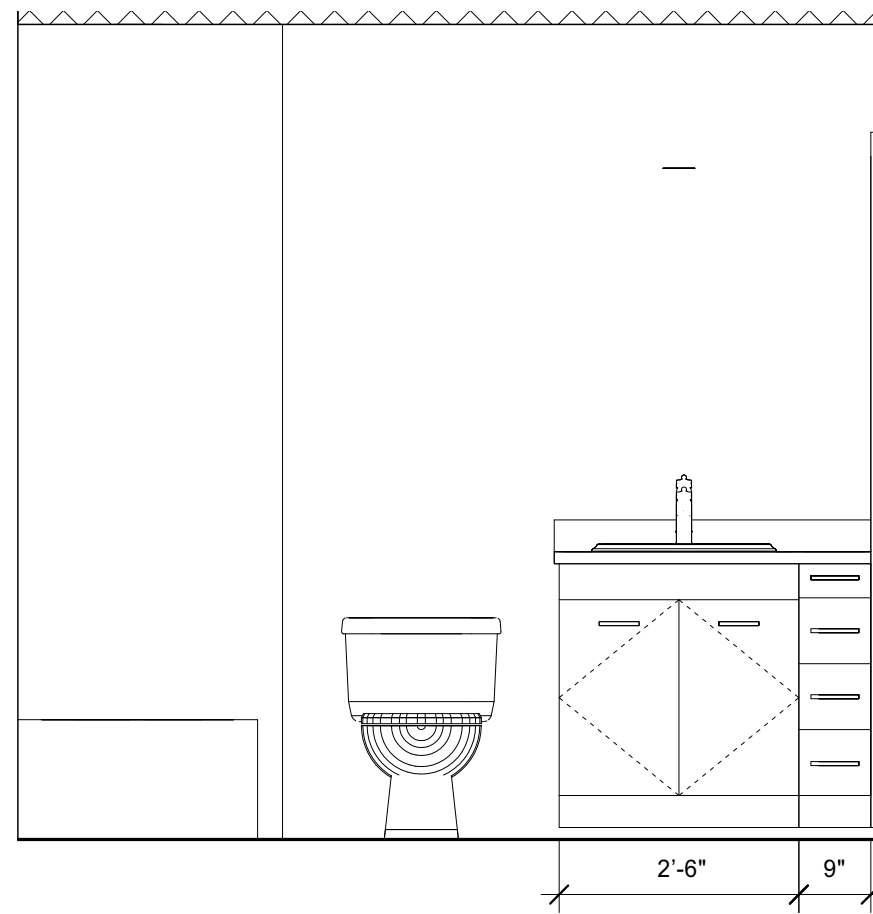
Date: 05/16/14



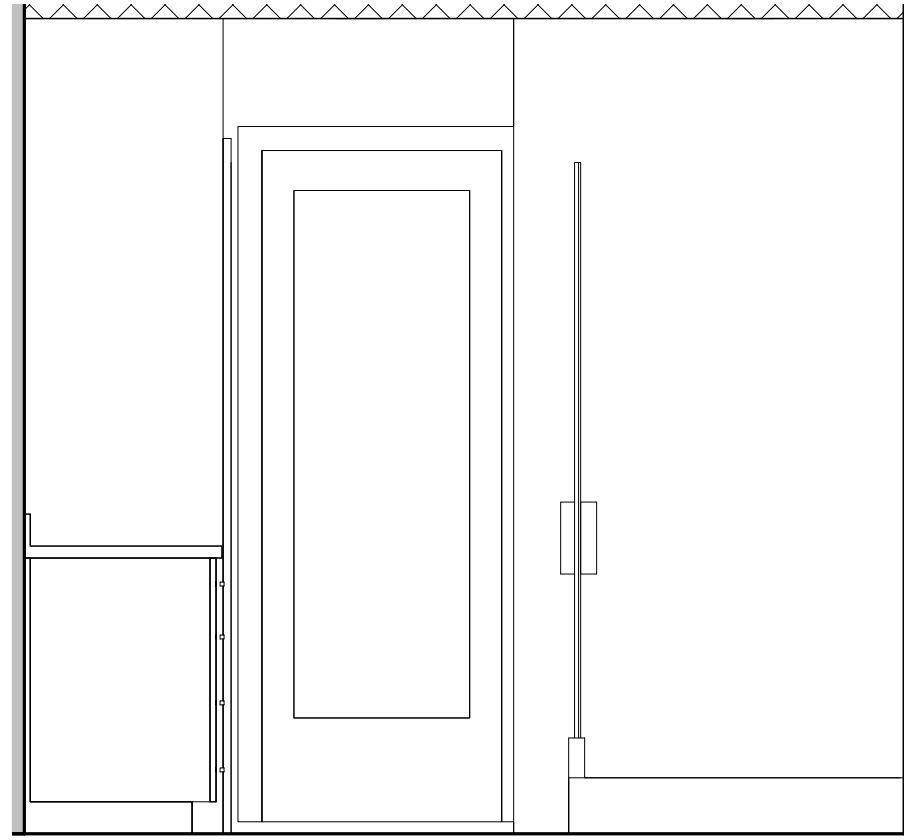
**G** | UNITS 202, 302 PRIMARY BATH ELEV. G



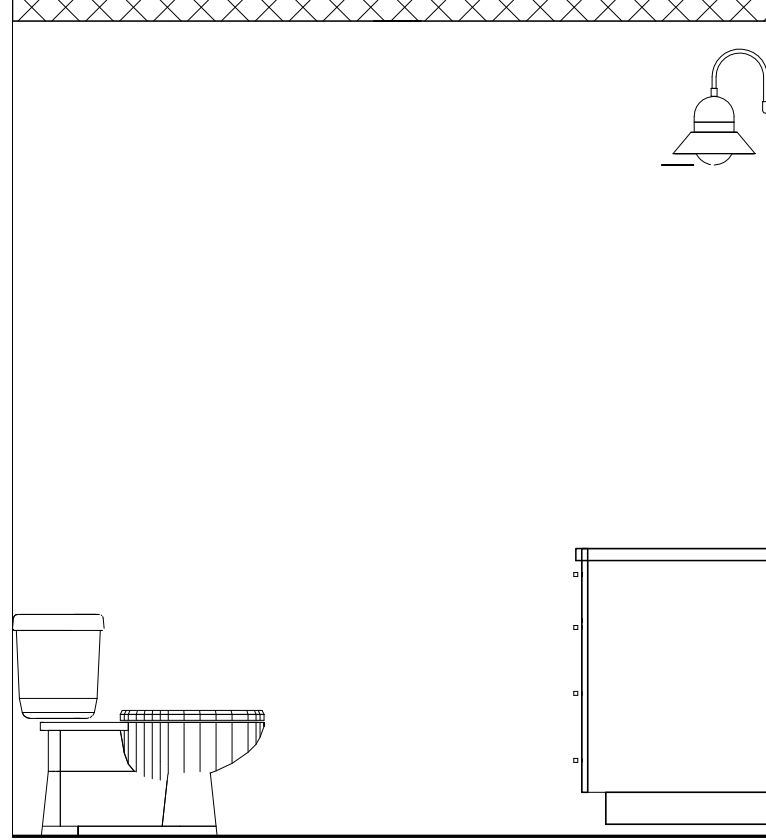
**J** | UNITS 202, 302 PRIMARY BATH ELEV. J



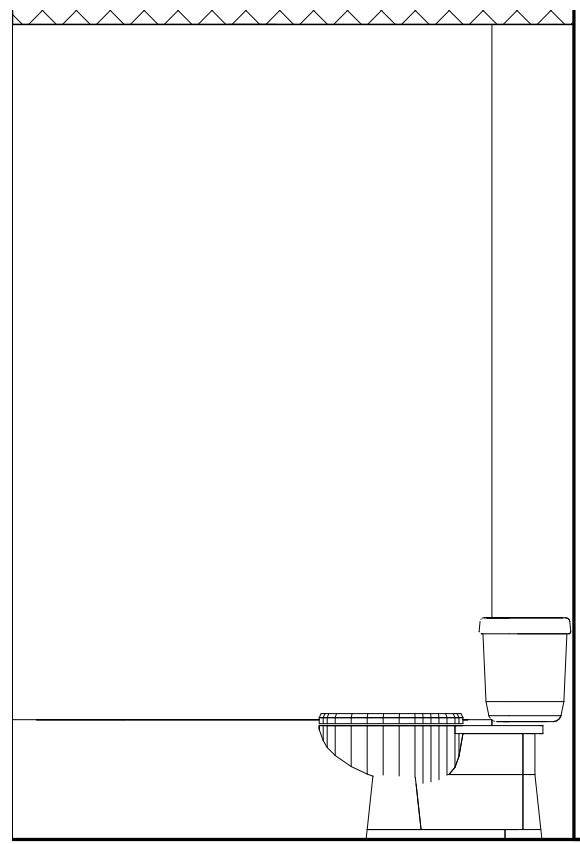
**X** | UNITS 202, 302 GUEST BATH ELEV. X



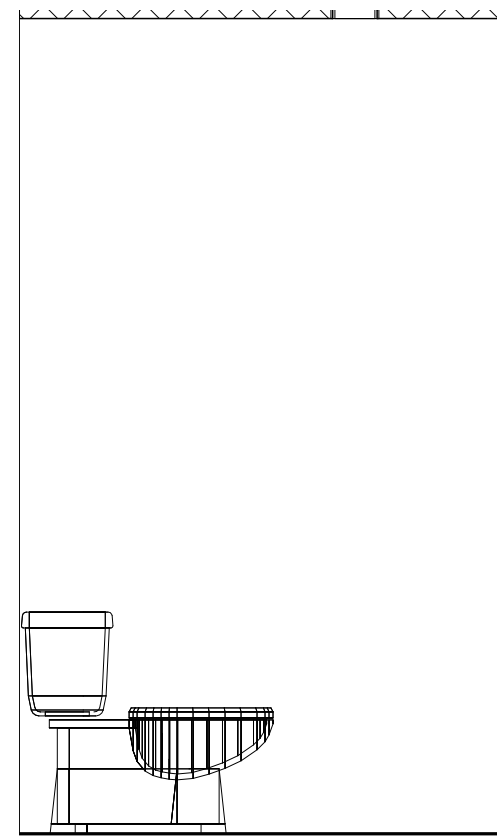
**H** | UNITS 202, 302 PRIMARY BATH ELEV. H



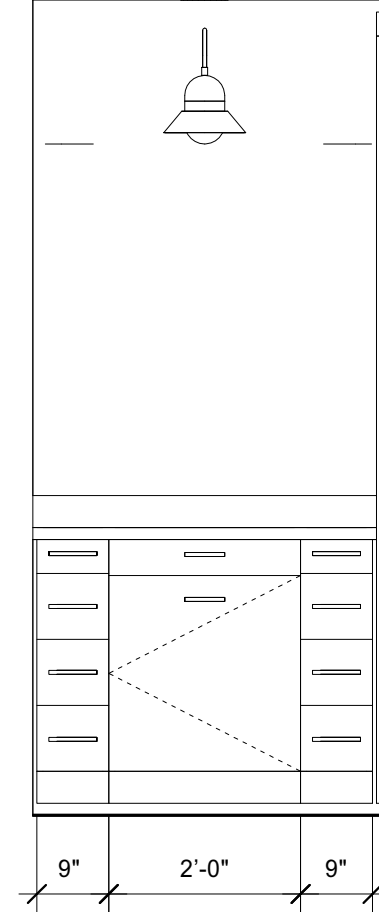
**L** | UNITS 202, 302 POWDER RM ELEV. L



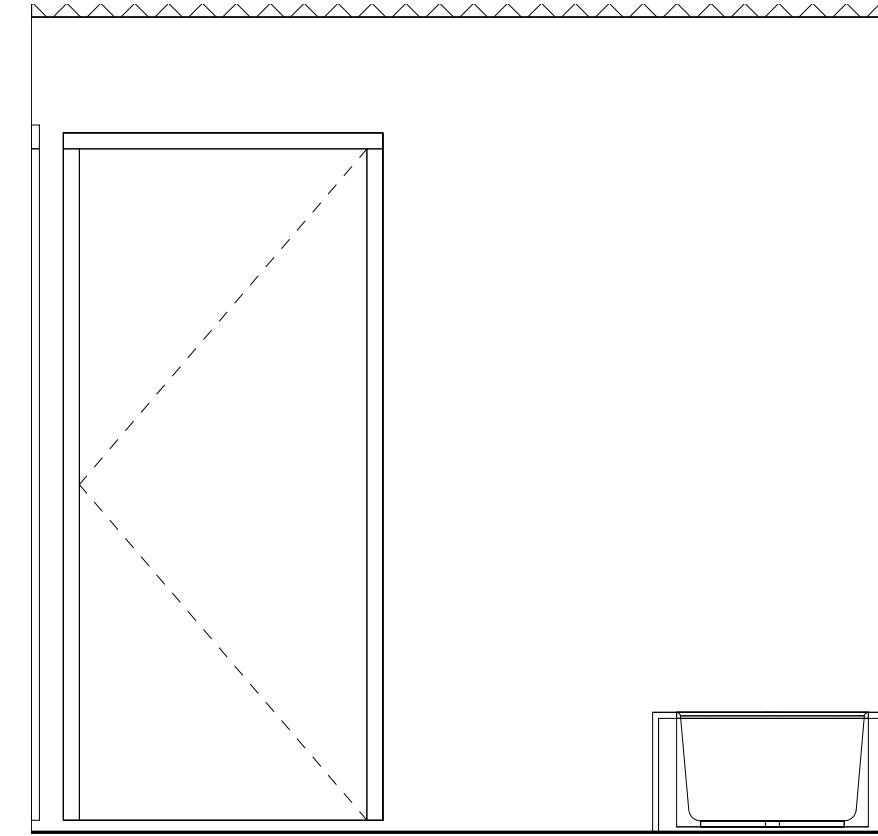
**AA** | UNITS 202, 302 - GUEST BATH ELEV. AA



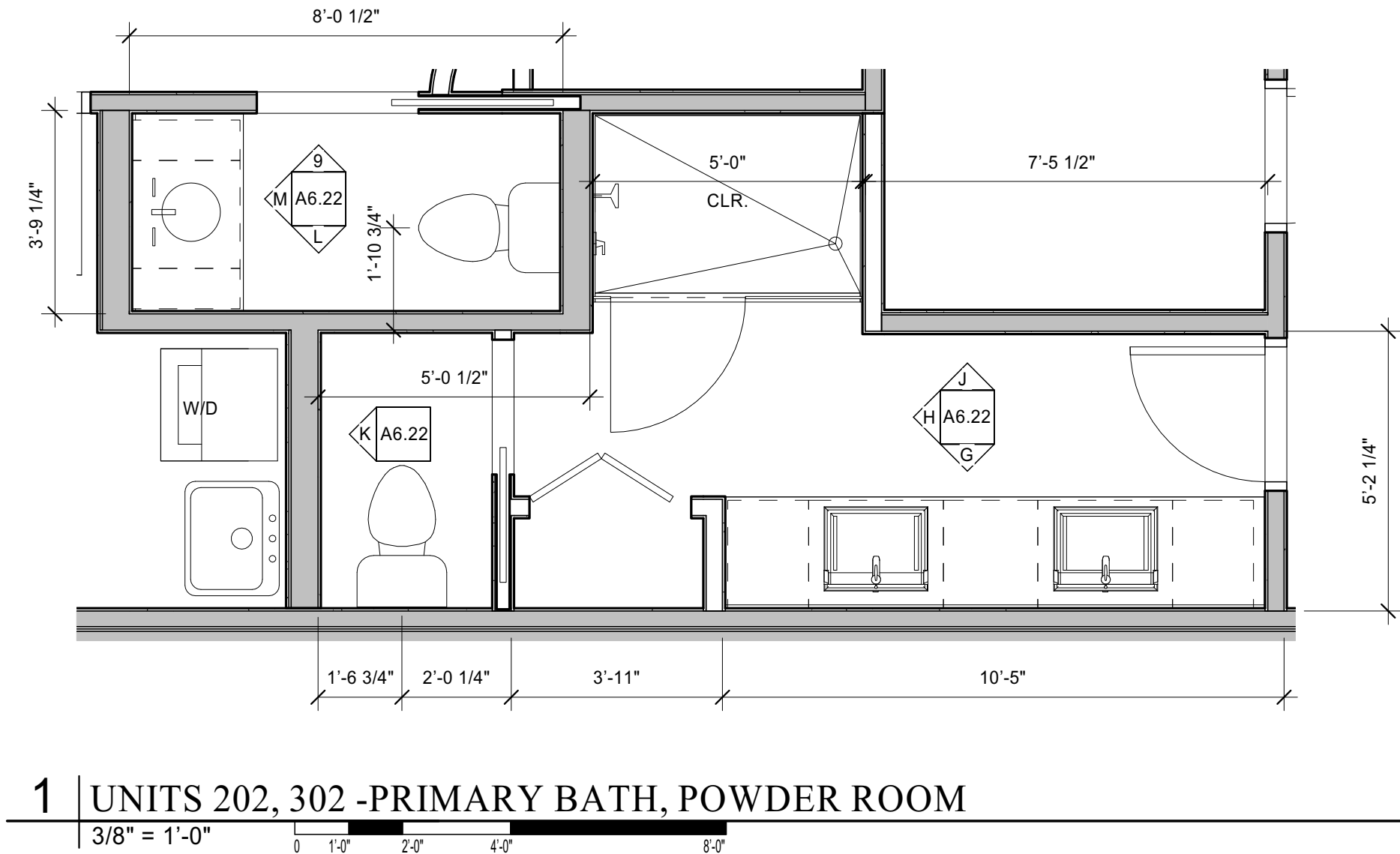
**K** | UNITS 202, 302 PRIMARY BATH ELEV. K



**M** | UNITS 202, 302 POWDER RM ELEV. M



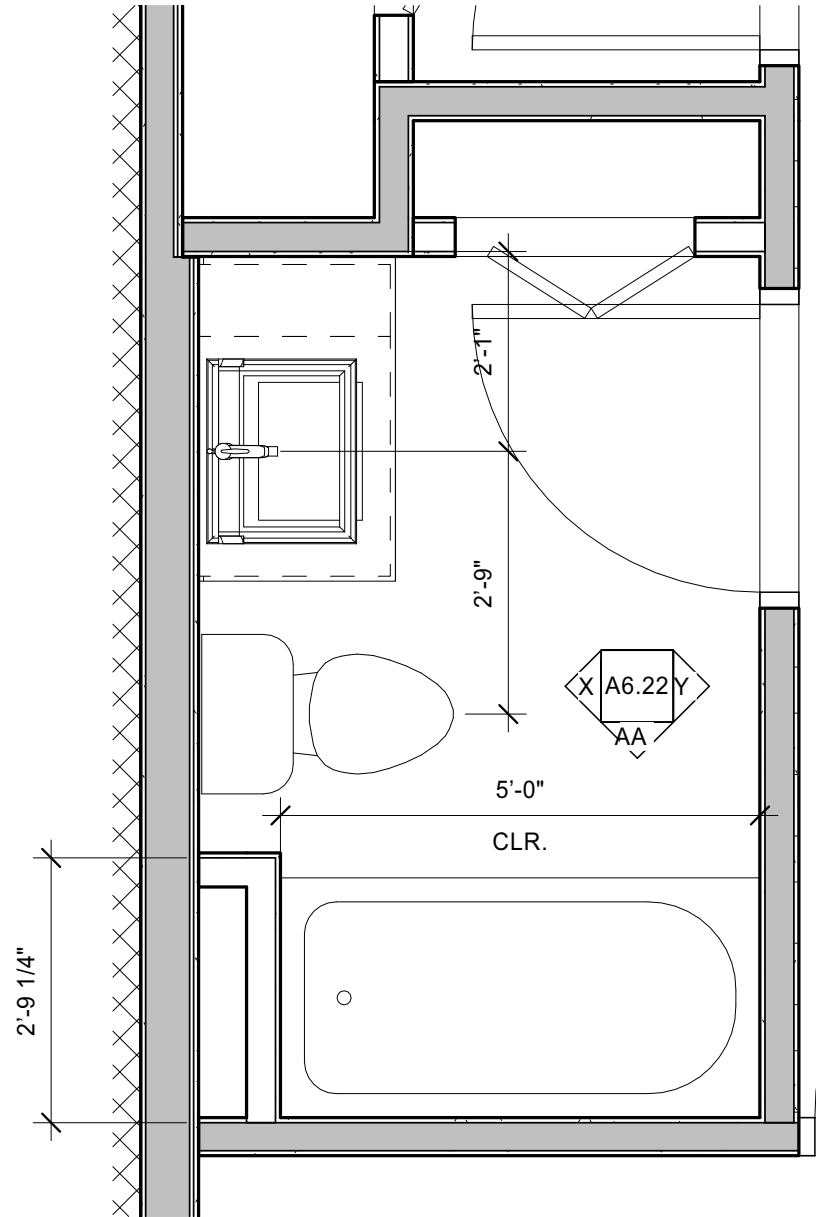
**Y** | UNITS 202, 302 GUEST BATH ELEV. Y



**1** | UNITS 202, 302 -PRIMARY BATH, POWDER ROOM



**9** | UNITS 202, 302 POWDER RM ELEV. N



**2** | UNITS 202, 302 - GUEST BATH PLAN

Prepared For:  
**118 on Munjoy Hill, LLC**  
118 CONGRESS STREET  
PORTLAND, ME 04101

Consultant:  
**ARCHETYPE architects**  
48 Union Wharf Portland, Maine 04101  
00772402 ARCHTYPE@ARCHTYPE.COM

Project:  
**118 ON MUNJOY HILL**  
118 CONGRESS STREET  
PORTLAND, MAINE

Revisions:

Date: 07 MAR 2014  
Scale: As indicated  
**ENLARGED PLANS - BATHROOMS**

**A6.22**